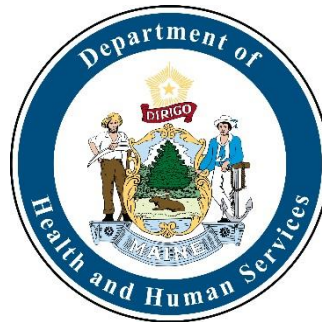


# Maine Immunization Program (MIP) VFC Updates 5/15/2025

Nicole Lake  
Public Health Educator

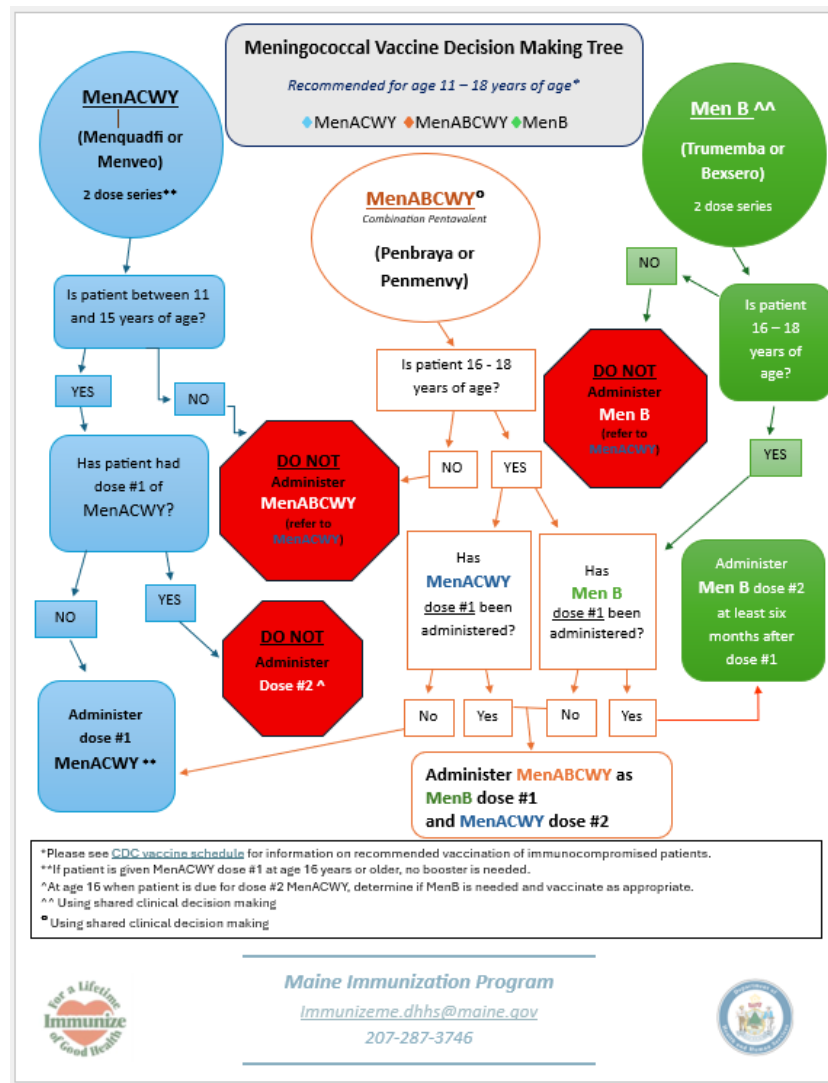


# Advisory Committee on Immunization Practices (ACIP) Meeting Updates

## April 15 - 16 ACIP Meeting Updates:

### Meningococcal Vaccine (PENMENVY - MenABCWY)

- ACIP added GSK's pentavalent meningococcal vaccine (MenABCWY, brand name PENMENVY) to the list of recommended options for when patients need both MenACWY and MenB vaccines at the same visit for those adolescents aged 16 years and older.
- PENMENVY was approved by Maine Vaccine Board on May 6<sup>th</sup>
- Vaccine not yet available for ordering - more to come!



# Routine Compliance

## Daily Requirements:

### VFC Temperature Monitoring

Check temperatures every morning on every unit on days the practice is open.

- ✓ Temperatures must be checked every morning the practice is open. If practice is closed, mark appropriate box.
- ✓ Temperature Minimum and Maximum must be recorded on a handwritten temperature log that should be on or near your unit.
- ✓ All temperature logs should be filled out completely at time of taking temp.
- ✓ If a reading is missed, leave a blank entry in the log. No backlogging or prefilling is allowed.

#### Maine Immunization Program Refrigerator Temperature Log

PIN# 9999

Month/Year: 2/2020

Record the minimum & maximum readings for your Refrigerator once daily in the morning. Acceptable temperatures for the Refrigerator must fall between 36°F and 46°F (2°C and 8°C). Please contact the vaccine manufacturer if your temperatures are outside of this acceptable range. Please use the comments box to document any follow up from out of range temperatures.

Day	Time	Office Closed	MIN Temp 24 Hours	MAX Temp 24 Hours	Initials
1	AM	<input checked="" type="checkbox"/>			
2	AM	<input checked="" type="checkbox"/>			
3	AM 8am	<input type="checkbox"/>	38	42	VM
4	AM 8am	<input type="checkbox"/>	38	40	VM
5	AM	<input checked="" type="checkbox"/>			
6	AM	<input checked="" type="checkbox"/>			

Day	Time	Office Closed	MIN Temp 24 Hours	MAX Temp 24 Hours	Initials
18	AM	<input type="checkbox"/>			
19	AM	<input type="checkbox"/>			
20	AM	<input type="checkbox"/>			
21	AM	<input type="checkbox"/>			
22	AM	<input type="checkbox"/>			
23	AM	<input type="checkbox"/>			



Remove any expired vaccine



Accept orders in ImmPact on the day they come- confirming what you received matches the packing sheet

# Routine Compliance Con't

## Weekly Requirements

- ✓ Document doses administered in ImmPact within 5 days of administration
  - *By law, administered State supplied vaccines must be entered into ImmPact within 5 business days*
- ✓ Check & Correct the fix tool for data exchange sites

**Data Exchange**  
exchange data  
check status  
view dx log  
des-dec fix tool  
des-dec detail report  
**Clinic Event**

## Bi-Weekly Requirements

- ✓ Inventory reconciliation
  - *recommended to be done weekly*
- ✓ Enter cold chain in ImmPact



# Annual Education Requirement



**Education module and post test will be available on our website  
July 1<sup>st</sup>**

All assigned primary and back up vaccine coordinators are required to complete the annual education requirement

❖ *Failure to complete training by July 31<sup>st</sup> will impact your ability to order vaccines in ImmPact.*



# Requirements for Maintaining Enrollment

## Provider Agreement

- The updated Provider Agreement will be available in ImmPact on **June 1, 2025**.
- Vaccine shipments will be suspended starting **July 1<sup>st</sup>, 2025**, for sites without an approved Provider Agreement.

## Data Logger Calibration Certificate

- All MIP-enrolled sites must submit a copy of calibration certificates for both primary and backup data loggers used to monitor vaccine storage units.
  - All new data loggers came with an updated calibration certificate. Please submit this certificate, along with an updated back up calibration certificate.
- ❖ Certificates can be Emailed to: [ImmunizeME.DHHS@maine.gov](mailto:ImmunizeME.DHHS@maine.gov) or faxed to - 207-287-8127

## Vaccine Need

- Providers must report their vaccine need profile based on populations served during the last 12 months.
- This helps MIP determine appropriate vaccine allocations.
- To complete the "*vaccine need*" in ImmPact, locate "*Maintenance*" on the left-hand toolbar.



# Upcoming Expirations

## Influenza Expiring 6/30/25:



- All flu expires 6/30/2025
- Please clean up all inventory to be sure that any remaining flu doses reflects appropriately on your wastage report.

## COVID-19 Vaccine:

- **Novavax vaccine** is no longer available for ordering (last field expiry was 4/30/2025). Please remove expired doses
- **Pfizer and Moderna vaccines** remain available with these expiries: No shelf-life extension

### **Remaining Moderna Inventory:**

- 6m–11y: 9/12/2025
- 12y+: 9/14/2025

### **Remaining Pfizer Inventory:**

- 6m–4y, 5–11y (3-month shelf life; viable for 10 weeks in the refrigerator)
- 12y+: 9/6/2025.



# Questions?

**Nicole Lake**  
**Public Health Educator**  
**Nicole.Lake@Maine.Gov**

